



www.axmann-scaffolding.com

ACCESSORIES
SCAFFOLDING, SHORING, FORMWORK
Trading - sale - cutting



Scaffolding

Tarps and nets

Shoring

Formwork



SCAFFOLDING, FORMWORK, SHORING ACCESSORIES
www.axmann-scaffolding.com

Summary

Company p.5

Scaffolding

..... p.7

Right angle couplers
Swivel couplers
Wedge couplers
Clamps
Connecting clamps
Junction pins and couplers
Axclamps couplers
Various couplers
Pins
Bolts and screws
Anchorings
Base jacks
Tubes
Metal sheets
Various accessories
Scaffolding structures
Products on consultation
Tailor-made and customizable service

Tarps and nets

..... p.37

Scaffolding nets
Scaffolding tarps
Peripheral nets
Security nets
Accessories

Shoring

..... p.43

Formwork

..... p.45

Nuts 15-17 mm
Rods 15-17 mm
Rods accessories 15-17 mm
Nuts 20-23 mm
Rods 20-23 mm
Rods accessories 20-23 mm
Various accessories

Our company

Axmann offers you a complete program of reliable and robust accessories for your scaffolding, shoring or formwork.

A significant part of our products is tested and our production site is subject to regular quality controls. All our accessories have proven themselves in the field.

Our mass production guarantees reliability and good value for money.

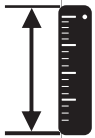
To become your partner, we bring you quick answers and professional service, based on 15 years of experience.

What if Axmann was the solution for you too ?



AVAILABLE STOCK

Efficiency, availability and meeting deadlines are at the center of our concerns. The majority of our items are kept in stock. Three warehouses located in Île-de-France, in the South and in the North guarantee you a rapid supply.



SPECIFIC PRODUCTS

We support you throughout your project for your manufacturing requiring specific needs. A tailor-made cut, a marking with your logo, a particular product to manufacture, we are there to answer all your requests.



RELIABLE PRODUCTS

Our items are regularly checked. We provide you with the test reports, material certificates and technical data you need on demand.



SHIPPING IN 24H

Our products can be dispatched the same day for any order before noon. Our experienced logistics service organizes operations for export in order to deliver quickly to Europe or around the world.

Key figures

1,5

MILLION
of items sold
each year

3

storage
warehouses

200

Catalog
references

2

THOUSAND
tonnes of steel
sold

Scaffolding



RIGHT ANGLE COUPLERS WITH NUT

FORGED STEEL RIGHT ANGLE COUPLERS

Find below the selection of our forged steel right angle couplers. Our couplers are compatible with all brands of scaffolding.



HEAVY DUTY RIGHT ANGLE COUPLER

Hot dipped galvanized forged steel.

For tubes Ø 48,3 mm. Capacity load 1500 kg. Quick Pitch T-Screw Ø 14 mm and nut 22 mm. EN74 BB standard.

Reference	Tubes diameter	Weight
AAAG49_49AA	49 x 49 mm	1,25 kg



STANDARD RIGHT ANGLE COUPLER

Electrogalvanized forged steel.

Capacity load 900 kg. Nut 22 mm. EN74 A standard for the 49x49mm.

Reference	Tubes diameter	Weight
AAAB49_49AA	49 x 49 mm (Quick Pitch T-Screw)	1,10 kg
AAAB34_34AA	34 x 34 mm	1,01 kg
AAAB42_42AA	42 x 42 mm	1,06 kg
AAAB50_50AA	50 x 50 mm	1,36 kg
AAAB60_49AA	60 x 49 mm	1,47 kg
AAAB60_60AA	60 x 60 mm	1,74 kg
AAAB76_49AA	76 x 49 mm	2,16 kg
AAAB76_60AA	76 x 60 mm	2,15 kg



STANDARD RIGHT ANGLE COUPLER BLACK PAINTING

Electrogalvanized forged steel.

Capacity load 900 kg. Quick Pitch T-Screw Ø 14 mm and nut 22 mm. EN74 A standard.

Reference	Tubes diameter	Weight
FAAP49_49AA	49 x 49 mm	1,30 kg



LIGHT RIGHT ANGLE COUPLER

Galvanized forged steel.

Capacity load 900 kg. Matt screw with standard pitch. 21 mm hexagonal nut with washer or 22 mm nut. EN74 A standard.

Reference	Tubes diameter	Weight
AAAB49_49AB	49 x 49 mm	1 kg

RIGHT ANGLE COUPLERS WITH NUT

PRESSED STEEL RIGHT ANGLE COUPLER

Find below the selection of our pressed steel right angle couplers. Our couplers are compatible with all brands of scaffolding.



STANDARD RIGHT ANGLE COUPLER

Electrogalvanized pressed steel.

Capacity load 600 kg. Eye screw Ø 7/16 mm and nut 17 mm.

Reference	Tubes diameter	Weight
AAEB49_49AA	49 x 49 mm	0,75 kg



D TYPE RIGHT ANGLE COUPLER

Electrogalvanized pressed steel.

Capacity load 900 kg. Eye screw Ø 7/16 mm and nut 22 mm. EN74 A standard.

Reference	Tubes diameter	Weight
AAEB49_49AB	49 x 49 mm	0,92 kg

SWIVEL COUPLERS WITH NUT

FORGED STEEL SWIVEL COUPLERS

Find below the selection of our forged steel swivel couplers. Our couplers are compatible with all brands of scaffolding.



HEAVY DUTY SWIVEL COUPLER

Galvanized forged steel.

For tubes Ø 48,3 mm. Capacity load 600 kg. Quick Pitch T-Screw Ø 14 mm and nut 22 mm. EN74 AA standard.

Reference	Tubes dimensions	Weight
ABAG49_49AA	49 x 49 mm	1,42 kg



STANDARD SWIVEL COUPLER

Electrogalvanized forged steel.

Capacity load 600 kg. Nut 22 mm. EN74 A standard only for 49x49 mm.

Reference	Tubes diameter	Weight
ABAB49_49AA	49 x 49 mm (Quick Pitch T-Screw)	1,25 kg
ABAB34_34AA	34 x 34 mm	1,01 kg
ABAB34_42AA	34 x 42 mm	1,06 kg
ABAB34_49AA	34 x 49 mm	1,14 kg
ABAB38_49AA	38 x 49 mm	1,10 kg
ABAB42_42AA	42 x 42 mm	1,06 kg
ABAB42_49AA	42 x 49 mm	1,19 kg
ABAB50_50AA	50 x 50 mm	1,70 kg
ABAB60_60AA	60 x 60 mm	1,80 kg
ABAB76_49AA	76 x 49 mm	1,94 kg
ABAB76_60AA	76 x 76 mm	2,3 kg



STANDARD SWIVEL COUPLER BLACK PAINTING

Galvanized forged steel.

Capacity load 600 kg. Quick Pitch T-Screw Ø 14 mm and nut 22 mm. EN74 A standard.

Reference	Tubes dimensions	Weight
FBAP49_49AA	49 x 49 mm	1,41 kg



LIGHT SWIVEL COUPLER

Galvanized forged steel.

Capacity load 600 kg. Matt screw with standard pitch. 21 mm hexagonal nut with washer. EN74 A standard.

Reference	Tubes dimensions	Weight
ABAB49_49AC	49 x 49 mm	1,25 kg

SWIVEL COUPLERS WITH NUT

PRESSED STEEL SWIVEL COUPLER

Find below the selection of our pressed steel swivel couplers. Our couplers are compatible with all brands of scaffolding.



STANDARD SWIVEL COUPLERS

Electrogalvanized pressed steel.

Capacity load 300 kg. Eye screw Ø 7/16 mm and nut 17 mm.

Reference	Tubes diameter	Weight
ABEB49_49AC	49 x 49 mm	0,71 kg



D TYPE SWIVEL COUPLERS

Electrogalvanized pressed steel.

Capacity load 600 kg. Eye screw Ø 7/16 mm and nut 22 mm. EN74 A standard.

Reference	Tubes diameter	Weight
ABEB49_49AD	49 x 49 mm	0,83 kg

WEDGE COUPLERS

WEDGE RIGHT ANGLE COUPLER

Find below the selection of our wedge right angle coupler.



WEDGE RIGHT ANGLE COUPLER

Galvanized forged steel.
Folded - welded round Ø 12 mm.

Reference	Tubes diameter	Weight
FAFB49_49AA	49 x 49 mm	1,45 kg



WEDGE HALF CLAMP

Black steel.
Folded - welded round Ø 12 mm.

Reference	Tube diameter	Weight
ACFN49_12AA	49 mm	0,80 kg

WEDGE SWIVEL COUPLER

Find below the selection of our wedge swivel coupler compatible with all brands of scaffolding.



FORGED STEEL WEDGE SWIVEL COUPLER

Galvanized forged steel.
Folded - welded round Ø 12 mm.

Reference	Tubes diameter	Weight
ABFB49_49AA	49 x 49 mm	1,68 kg



WEDGE SWIVEL COUPLER EG

Electrogalvanized steel.
Wedge length 151 mm.

Reference	Tubes diameter	Weight
ABAB45_21AA	45 x 21 mm	1,35 kg
ABAB45_45AA	45 x 45 mm	1,67 kg

CLAMPS

For your specific products, we offer a full range of clamps for various uses. Welding clamps, economical, disassembled, with or without nuts, with or without wedges. Our clamps can be used for all brands of scaffolding.



CLAMP WITHOUT BOLT

Black forged steel.

Reference	Tube diameter	Weight
ACAN49_00AA	Ø 49 mm	0,59 kg
ACAN34_00AA	Ø 34 mm	0,49 kg
ACAN42_00AA	Ø 42 mm	0,51 kg
ACAN60_00AA	Ø 60 mm	0,76 kg
ACAN76_00AA	Ø 76 mm	1,13 kg



GALVANIZED CLAMP

Galvanized forged steel.
With bolt.

Reference	Tube diameter	Weight
ACAB49_14AD	Ø 49 mm	0,69 kg
ACAB60_00AA	Ø 60 mm	0,85 kg



CLAMP WITH WING NUT

Black forged steel.
Quick tightening with 2 wing nuts Ø 14 mm.

Reference	Tube diameter	Weight
ACAN34_14AA	Ø 34 mm	0,48 kg



DISMANTLED CLAMP

Black and galvanized forged steel.
Galvanized cover and rivet. Black body, for welding before galvanizing. Supplied without screws or bolts.

Reference	Tube diameter	Weight
ACAX49_00AA	Ø 49 mm	0,55 kg

CLAMPS

For your specific products, we offer a full range of clamps for various uses. Welding clamps, economical, disassembled, with or without nuts, with or without wedges. Our clamps can be used for all brands of scaffolding.

PRESSED STEEL CLAMPS

Find below the selection of our pressed steel clamps.



STANDARD CLAMP

Electrogalvanized pressed steel.
Eye screw Ø 7/16 mm and nut 17 mm.

Reference	Tube diameter	Weight
ACEB49_11AB	Ø 49 mm	0,35 kg



2 WING NUT CLAMP

Electrogalvanized pressed steel.
2 wings nut Ø 7/16 mm.

Reference	Tube diameter	Weight
ACEB49_11AA	Ø 49 mm	0,40 kg

WEDGE CLAMPS

If you are looking for an assembly of your coupler with wedge, you will find our selection below.



U COUPLER WITH FOLDED WEDGE

Black steel.
Length clavette 151 mm.

Reference	Tube diameter	Weight
ACEN49_00AA	Ø 49 mm	0,85 kg
ACEN45_00AA	Ø 45 mm	0,76 kg
ACEN21_00AA	Ø 21 mm	0,65 kg



FOLDED WEDGE

Black steel.
Length clavette 159 mm.

Reference	Thickness	Weight
ACEN26159AA	5 mm	0,32 kg

CLAMPS

For your specific products, we offer a full range of clamps for various uses. Welding clamps, economical, disassembled, with or without nuts, with or without wedges. Our clamps can be used for all brands of scaffolding.

WEDGER CLAMPS

If you are looking for an assembly of your coupler with wedge, you will find our selection below.



U COUPLER WITH FLAT WEDGE

Black pressed steel.
Electrogalvanized wedge.

Reference	Tube diameter	Weight
ACEX49_00AA	Ø 49 mm	0,83 kg
FCEX21_00AA	Ø 21 mm	0,70 kg
ACEX42_00AA	Ø 42 mm	0,53 kg
ACEX45_00AA	Ø 45 mm	0,77 kg



U COUPLER WITHOUT WEDGE

Black pressed steel.

Reference	Tube diameter	Weight
FCEN49_00AA	Ø 49 mm	0,83 kg



FLAT WEDGE

Electrogalvanized flat wedge. Can be used with clamp FCEN49_00AA presented above. Length 110 mm.

Reference	Thickness	Weight
FOEB24110AA	6 mm	0,085 kg



U COUPLER WITH WELDED WEDGE

Black pressed steel.

Reference	Tube diameter	Weight
FCEN49_96AA	Ø 49 mm	0,85 kg

CONNECTING CLAMPS

Connection and junction clamps are essential accessories for connections, extensions, moorings or occasional reinforcements. The connection or junction systems must be a function of the work to be carried out, you will find in our selection a set of solutions for each of your particular cases.



CLAMP WITH WELDED BOLT

Galvanized forged steel.

Quick Pitch T-Screw Ø 14 mm soudée, Length 50 mm and nut 22 mm.

Reference	Tube diameter	Weight
ACAB49_14AA	Ø 49 mm	0,77 kg
FCAB60_14AA	Ø 60 mm	0,99 kg



SNAP LOCK CLAMP

Galvanized forged steel.

Welded stud Ø 20 x 47 mm and safety rocker. T-bolt Ø 14 mm and nut 22 mm.

Reference	Tube diameter	Weight
ACAB49_20AA	Ø 49 mm	0,78 kg

JUNCTION PINS AND COUPLERS

Connection and junction clamps are essential accessories for connections, extensions, moorings or occasional reinforcements. The connection or junction systems must be a function of the work to be carried out, you will find in our selection a set of solutions for each of your particular cases.



SLEEVE COUPLER

Galvanized forged steel.

To be used with a junction pin. T-bolt Ø 14 mm and 22 mm nut.

Reference	Tube diameter	Length	Weight
ACAB49_14AC	Ø 49 mm	124 mm	1,42 kg

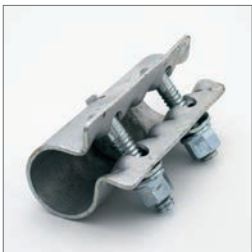


FORGED JOINTING PIN

Galvanized forged steel.

For tube Ø 49 mm.

Reference	Diameter	Length	Weight
AOFB38200AA	Ø 38	183 mm	1,16 kg



SLEEVE COUPLER PRESTO

Electrogalvanized pressed steel.

Can be used without a connecting pin. T-bolt Ø 14 mm and nut 22 mm.

Reference	Tube diameter	Length	Weight
ACEB49_14AA	Ø 49 mm	153 mm	1,15 kg



JOINTING PIN

Electrogalvanized pressed steel.

Used without sleeve coupler. Resumes only the compression forces.

Reference	Diameter	Length	Weight
AOEB38187AA	Ø 39 à 42 mm	187 mm	0,82 kg

AXCLAMPS COUPLERS

See below our full range of galvanized cast iron couplers for tubular construction such as a ramp, railing, mezzanine ... You will find below a selection of the parts we offer. **Our couplers are available for diameter 27, 34, 42, 49, 60 mm tubes. Please note, allow 10 days for all deliveries.**



SHORT T COUPLER

Malleable galvanized cast iron.
Capacity load 700 kg. Zinc plated steel inserts.

Reference	Tube diameter	Weight
ACOB49068AA	Ø 49 mm	0,6 kg



LONG T COUPLER

Malleable galvanized cast iron.
Capacity load 700 kg. Zinc plated steel inserts.

Reference	Tube diameter	Weight
ACOB49135AA	Ø 49 mm	1,01 kg



90° ELBOW COUPLER

Malleable galvanized cast iron.
Capacity load 700 kg. Zinc plated steel inserts.

Reference	Tube diameter	Weight
ACOB49068AB	Ø 49 mm	0,73 kg



90° ELBOW 3 OUTPUTS COUPLER

Malleable galvanized cast iron.
Capacity load 700 kg. Zinc plated steel inserts.

Reference	Tube diameter	Weight
FCOB49068AB	Ø 49 mm	0,99 kg

AXCLAMPS COUPLERS

See below our full range of galvanized cast iron couplers for tubular construction such as a ramp, railing, mezzanine ... You will find below a selection of the parts we offer. **Our couplers are available for diameter 27, 34, 42, 49, 60 mm tubes. Please note, allow 10 days for all deliveries.**



CORNER (MIDDLE RAIL) COUPLER

Malleable galvanized cast iron.
Capacity load 700 kg. Zinc plated steel inserts.

Reference	Tube diameter	Weight
FCOB49068AA	Ø 49 mm	0,73 kg



SLOPE CROSS (MIDDLE RAIL) COUPLER

Malleable galvanized cast iron.
Capacity load 700 kg. Zinc plated steel inserts.

Reference	Tube diameter	Weight
FCOB49135AA	Ø 49 mm	0,76 kg



RAILING BASE FLANGE

Malleable galvanized cast iron.
Capacity load 700 kg. Zinc plated steel inserts.

Reference	Tube diameter	Weight
FOOB49090AA	Ø 49 mm	1,17 kg

AXCLAMPS COUPLERS

See below our full range of galvanized cast iron couplers for tubular construction such as a ramp, railing, mezzanine ... You will find below a selection of the parts we offer. **Our couplers are available for diameter 27, 34, 42, 49, 60 mm tubes. Please note, allow 10 days for all deliveries.**



HANDRAIL WALL BRACKET

Malleable galvanized cast iron.
Capacity load 700 kg. Zinc plated steel inserts.

Reference	Tube diameter	Weight
FOOB49070AA	Ø 49 mm	0,60 kg



INTERNAL JUNCTION COUPLER

Malleable galvanized cast iron.
Capacity load 700 kg. Zinc plated steel inserts.

Reference	Tube diameter	Weight
FCOB49078AA	Ø 49 mm	0,43 kg



EXTERNAL JUNCTION COUPLER

Malleable galvanized cast iron.
Capacity load 700 kg. Zinc plated steel inserts.

Reference	Tube diameter	Weight
FCOB49100AA	Ø 49 mm	0,59 kg

CONSULT US FOR THE REST OF THE RANGE.

VARIOUS COUPLERS

IPN coupler with or without blocking, fixed plinth collar, rafter collar, step / stringer. Find all our other necklaces for specific use.



PUTLOG CLAMP

Galvanized forged steel.

Reference	Tube diameter	Length	Weight
ACEB49_00AA	Ø 49 mm	100 mm	0,63 kg



RING COUPLER

Galvanized forged steel.

Reference	Tube diameter	Weight
ACEB49_00AB	Ø 49 mm	1,16 kg



T COUPLER

Electrogalvanized pressed steel.

Reference	Tube diameter	Weight
ACEB49_00AC	Ø 49 mm	0,71 kg



TIMBER COUPLER

Galvanized forged steel.

Timber coupler for fixing wooden profiles to the scaffolding uprights. Adjustable folded angle of 60 x 70 x 160 mm. Ø 14 mm T-screw and 22 mm nut.

Reference	Tube diameter	Weight
ACAB49_00AD	Ø 49 mm	1,15 kg

VARIOUS COUPLERS

Claw coupler, gravlock coupler, toe board coupler, wood and stair tread coupler. Find all our other couplers for a specific use.



TOE BOARD COUPLER

Galvanized forged steel.

Clamps for fixing plinths with eyelets on the upright of a scaffolding. 145 x Ø 14 mm rod. Ø 14 mm T-screw and 22 mm nut.

Reference	Tube diameter	Weight
ACAB49_14AB	Ø 49 mm	0,80 kg



CLAW COUPLER

Galvanized forged steel.

IPN clamp for fixing a tube on the underside of an IPN type metal beam. These clamps are used in pairs on either side of the beam.

Reference	Tube diameter	Weight
ACAB49_00AE	Ø 49 mm	0,90 kg



GRAVLOCK COUPLER

Galvanized forged steel.

IPN clamp for fixing a tube on the underside of an IPN type metal beam. These collars are used in pairs on either side of the beam. With locking bolt.

Reference	Tube diameter	Weight
ACAB49_14AE	Ø 49 mm	1,41 kg



LATTICE BEAM COUPLER

Galvanized forged steel.

Reference	Tubes diameter	Weight
ACAB49_00AC	49 x 49 mm	1,68 kg

VARIOUS COUPLERS

Claw coupler, gravlock coupler, toe board coupler, wood and stair tread coupler. Find all our other couplers for a specific use.



WOOD AND STAIR TREAD COUPLER

Pressed galvanized steel.

Clamp for fixing wooden steps on a lattice beam or a tube (adjustable angle).

Reference	Tube diameter	Weight
ACAB49215AA	Ø 49 mm	1,45 kg



GUARDRAIL COUPLER (LAYHER)

Galvanized forged steel.

Wedge clamp for scaffolding Layher type. Includes wedge clamp on the one hand and the box for the healds and guardrails of the Layher brand on the other hand.

Reference	Tube diameter	Weight
ACAB49_00AB	Ø 49 mm	1,30 kg



LIFTING COUPLER

Electrogalvanized steel.

Reference	Tube diameter	Weight
ACAB49_12AA	Ø 49 mm	1,22 kg



STARTING JACK

Hot dip galvanized steel.

For tube Ø 49. To install an upright in the axis of a tube or a truss beam.

Reference	Height	Weight
ACMB49_50AA	500 mm	2,90 kg

PINS

To secure your assemblies, Axmann offers a whole range of pins.



CLEVIS PIN

Electrogalvanized steel.

Replaces the bolts for connecting the tubes. Drilling Ø 4 mm. Supplied with Ø 4 mm safety pin.

Reference	Diameter broche	Length	Weight
AOUB10064AA	Ø 10 mm	64 mm	0,06 kg
AOUB12064AA	Ø 12 mm	64 mm	0,08 kg
AOUB10075AA	Ø 10 mm	75 mm	0,07 kg
AOUB16115AA	Ø 16 mm	115 mm	0,21 kg



GRAVITY LOCK PIN

Electrogalvanized steel.

Pin for connecting the uprights or the scaffolding frames.

Reference	Diameter broche	For tube	Weight
AOFB49_10AA	Ø 10 mm	Ø 49 mm	0,12 kg
AOFB49_12AA	Ø 12 mm	Ø 49 mm	0,16 kg
AOFB57_12AA	Ø 12 mm	Ø 57 mm	0,22 kg
FOFB71_14AA	Ø 14 mm	Ø 71 mm	0,40 kg



FLIP LOCK REPLACEMENT PIN

Electrogalvanized steel.

This stud is fixed on the internal upright of the scaffolding frames to allow the installation of additional beams. Supplied with nut. Ø 8 mm screw.

Reference	Stud diameter	Length	Weight
AOUB20047AA	Ø 20 mm	47 + 59 mm = 106 mm	0,14 kg



OMEGA LOCK PIN

Electrogalvanized steel.

For tube Ø 49 mm. Ø 10 mm, Length 52/57 mm.

Reference	Thickness	Weight
AOUB49_10AA	26 mm	0,06 kg

PINS

To secure your assemblies, Axmann offers a whole range of pins.



THREADED CONICAL PIN

Electrogalvanized steel.

To connect three-dimensional aluminum beams. Used with nylock nut ref. FDUB08_00AA below.

Reference	Diameter	Length	Weight
FOUB12066AA	Ø 12 mm	66 mm	0,04 kg



NYLOCK NUT

To use with threaded conical pin.

Reference	Thread	Weight
FDUB08_00AA	M8	0,05 kg



CONICAL PIN

Electrogalvanized steel.

To connect three-dimensional aluminum beams. Drilling Ø 2.8 mm. Use with retaining pin ref. AOFB42_02AA below.

Reference	Diameter	Length	Weight
FOUB12065AA	Ø 12 mm	65 mm	0,04 kg



RETAINING PIN (R-CLIPS)

Electrogalvanized steel.

Reference	Diameter	Length	Weight
AOFB42_02AA	Ø 2 mm	42 mm	0,02 kg



CIRCULAR PIN

Electrogalvanized steel.

Sold by 1000 pieces. Length 48 mm.

Reference	Diameter	Length	Weight
AOFB02_35AA	Ø 2,5 mm	35 mm	0,08 kg

BOLTS AND SCREWS

Need new bolts for your couplers ? Our catalog also offers these spare parts adaptable to all our couplers. Screw, nut, washer, Axmann meets all your needs.



QUICK THREAD T-BOLT

Hot dip galvanized steel.

Length indicated starts from the head.

Reference	Thread	Length	Weight
ADUG14_58AA	Ø 14 mm	58 mm	0,08 kg
ADUG14_67AA	Ø 14 mm	67 mm	0,09 kg
ADUG14_80AA	Ø 14 mm	80 mm	0,10 kg
ADUG14_98AA	Ø 14 mm	98 mm	0,12 kg



HEXAGONAL FLANGE NUT

Hot dip galvanized steel.

Reference	Thread	Mounting	Weight
ADUG14_22AA	Ø 14 mm	22 wrench	0,04 kg

ANCHORINGS

Anchoring are important for the stability of the scaffolding. Their dimensioning, their distribution, as well as their realization must be treated. They support tensile and compressive forces and must always be installed in line using scaffolding couplers. This is why we offer you all the equipment necessary for a quality anchoring.



ANCHORING TUBE

Hot dip galvanized steel.

For anchoring by fixing peg and plug. Hook Ø 16 mm.

Reference	Length	Weight
AMMG49050AA	50 cm	2,2 kg
AMMG49100AA	100 cm	4,10 kg
AMMG49110AA	110 cm	4,51 kg
AMMG49150AA	150 cm	6,10 kg



ANCHORING COUPLER

Electrogalvanized forged steel.

Hook Ø 16 mm.

Reference	Tube diameter	Weight
ACAB49_00AA	Ø 49 mm	0,95 kg



EYE BOLT

Electrogalvanized steel.

Ø 12 mm, used with plug Ø 14 mm.

Reference	Length under ring	Weight
AMUB12090AA	90 mm	0,16 kg
AMUB12120AA	120 mm	0,18 kg
AMUB12160AA	160 mm	0,22 kg
AMUB12190AA	190 mm	0,24 kg
AMUB12230AA	230 mm	0,27 kg
AMUB12270AA	270 mm	0,30 kg
AMUB12300AA	300 mm	0,33 kg
AMUB12350AA	350 mm	0,37 kg
AMUB12400AA	400 mm	0,41 kg
AMUB12450AA	450 mm	0,46 kg
AMUB12500AA	500 mm	0,50 kg

ANCHORING

Anchoring are important for the stability of the scaffolding. Their dimensioning, their distribution, as well as their realization must be treated. They support tensile and compressive forces and must always be installed in line using scaffolding couplers. This is why we offer you all the equipment necessary for a quality anchoring.



ANCHOR JACK

Electrogalvanized steel.

Reference	Length	Weight
AMUB38037AA	374 mm	2,54 kg



NYLON PLUG

Nylon.

For Ø 12 mm eye bolt. Plug Diameter Ø 14 mm. Sold by 100 pieces.

Reference	Length	Weight
AMNS14075AB	75 mm	4 g
AMNS14100AA	100 mm	10 g



COVER CAP

Nylon.

To close the plug holes after removing the eye bolt. Length 39 mm. For 14 mm plug. By bag of 100 units.

Reference	Diameter	Weight
AMNN12_40AA	Ø 25 mm	0,22 kg



STRAPS

Rislan.

Bag of 100 units.

Reference	Length	Width
AGPN48030AA	300 mm	4,8 mm

BASE JACKS

The base jack is a centerpiece of the scaffolding because it supports all the assembly. It can be fixed or swivel, depending on the circumstances. We offer various items for your departures or scaffolding installations; such as jack base, throat nut or swivel jack base ...



ADJUSTABLE BASE JACK 49 MM

Hot dip galvanized steel.
Ø 38 mm threaded tube.

Reference	Height	Height de réglage	Weight
AVMG38030AA	300 mm	150 mm	2,4 kg
AVMG38050AB	500 mm	350 mm	3,10 kg
AVMG38070AB	700 mm	530 mm	3,80 kg
AVMG38080AA	800 mm	560 mm	4,25 kg
AVMG38090AA	900 mm	670 mm	4,55 kg
AVMG38120AA	1200 mm	900 mm	6,00 kg



ADJUSTABLE BASE JACK 42 MM

Hot dip galvanized steel.
Ø 34 mm threaded tube.

Reference	Height	Adjustment height	Weight
AVMG34070AA	700 mm	530 mm	3,70 kg



SWIVEL BASE JACK

Hot dip galvanized steel.
Ø 38 mm threaded tube.

Reference	Height	Weight
AVMG38063AA	630 mm	3,60 kg
AVMG38082AA	820 mm	4,32 kg



BASE JACK PROTECTION

Plastic M3.
For base jack 150 x 150 mm.

Reference	Dimensions	Weight
AOQN19_25AA	187 x 248 mm	0,29 kg



JACK NUT

Electrogalvanized cast iron.

Reference	Diam. of threaded tube	Length	Weight
AVOB38150AA	Ø 38 mm	150 mm	0,55 kg

STEEL TUBES

This type of tube is used in scaffolding for tube + clamp structure, or in other structures such as storage, shelving, vehicle shelter, mezzanine...



STEEL TUBE

Galvanized steel.

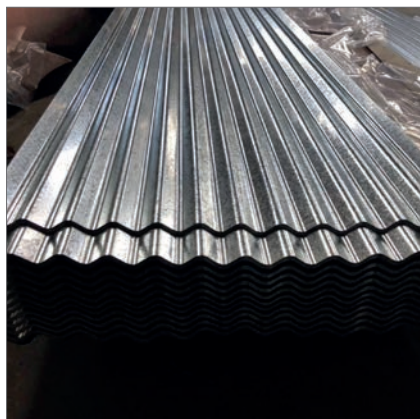
Standard EN 10 219. Cut on demand. Packaging in bundles of 61 tubes.

Reference	Diameter	Length	Thickness	Weight
TTCG49050AA	Ø 48,3 mm	0,50 m	3,2 mm	1,78 kg
TTCG49100AA	Ø 48,3 mm	1,00 m	3,2 mm	3,55 kg
TTCG49150AA	Ø 48,3 mm	1,50 m	3,2 mm	5,33 kg
TTCG49200AA	Ø 48,3 mm	2,00 m	3,2 mm	7,10 kg
TTCG49250AA	Ø 48,3 mm	2,50 m	3,2 mm	8,88 kg
TTCG49300AA	Ø 48,3 mm	3,00 m	3,2 mm	10,65 kg
TTCG49350AA	Ø 48,3 mm	3,50 m	3,2 mm	12,43 kg
TTCG49400AA	Ø 48,3 mm	4,00 m	3,2 mm	14,20 kg
TTCG49450AA	Ø 48,3 mm	4,50 m	3,2 mm	15,98 kg
TTCG49500AA	Ø 48,3 mm	5,00 m	3,2 mm	17,76 kg
ATCG49600AA	Ø 48,3 mm	6,00 m	3,2 mm	19,54 kg
ATCG42600AA	Ø 42,4 mm	6,00 m	3,2 mm	18,6 kg

ALUMINIUM TUBE ALSO AVAILABLE. CONSULT US.

METAL SHEETS

Find all our models of sheet metal for your uses on scaffolding in rubble guard, cladding and roofing. **Possibility of bending the sheets on request.**



CORRUGATED SHEET

Galvanized steel.
Ondulation measure 76/18.



Reference	Thickness	Dimensions	Weight
AOGB63300AA	0,63 mm	900 x 3000 mm	13,3 kg
AOGB63200AA	0,63 mm	900 x 2000 mm	9,66 kg
AOGB75200AA	0,75 mm	900 x 2000 mm	11,5 kg
AOGB75212AA	0,75 mm	900 x 2120 mm	12 kg



TRAPEZOIDAL SHEET

Ivory painted steel.
Ondulation measure 250/40.



Reference	Thickness	Dimensions	Weight
FOGB63212AA	0,63 mm	1000 x 2120 mm	11,59 kg



METAL SHEET CLIP

Galvanized steel.
For fixing metal sheet on scaffolding tubes.

Reference	Width	Length	Weight
ATFB49120AA	20 mm	134 mm	0,215 kg

VARIOUS ACCESSORIES

In this section of our catalog, we present a series of various accessories. Wheel, base jack for caster wheel or wrench for your scaffolding mountings, various articles are at your disposal in order to best complement your equipment.



CASTER WHEEL

Polyurethane and galvanized steel.

Foot plate 140 x 110 mm. Available with or without jack. Ø 38 mm threaded jack for Ø 49 mm tube, height 500 mm, adjustment height 350 mm.

Reference	Capacity load	Diameter	Weight
ARDZ20040AA	400 kg	Ø 20 cm	2,84 kg
ARDB20075AA	750 kg	Ø 20 cm	4,99 kg
ARDB20075AB (with jack)	750 kg	Ø 20 cm	5,90 kg



BASE JACK FOR CASTER WHEEL

Hot dip galvanized steel.

Plate 140 x 110 mm. Drilling 105 x 75 to 80 mm. Assembly by 4 bolts 8 x 30 mm on the plate casters. Ø 38 mm threaded tube for mounting on Ø 49 mm tube.

Reference	Height	Adjustement height	Weight
AVMG38050AA	500 cm	350 mm	2,81 kg



FRAME CUP

Black pressed steel.

External diameter 120 mm. Height 40 mm. Upper flat Ø 66 mm. Thickness 4 mm.

Reference	Weight
AIEN12_04AA	0,47 kg



FENCING CLAMP

Galvanized steel.

To link fences in Ø 34 to 38 mm tube. Height 50 mm. 22 mm nut. Center distance 93 mm. Thickness 3 mm.

Reference	Length	Weight
ACEB34_38AA	129 cm	0,39 kg

VARIOUS ACCESSORIES

In this section of our catalog, we present a series of various accessories. Wheel, base jack for caster wheel or wrench for your scaffolding mountings, various articles are at your disposal in order to best complement your equipment.



RATCHET WRENCH

Forged steel.

Reference	Nuts Ø	Length	Weight
AOAS19_22AA	19-22 mm	310 mm	0,49 kg
AOAS21_22AA	21-22 mm	312 mm	0,45 kg



RATCHET HAMMER WRENCH



Multifunction key created by Axmann. 4 functions available on the same tool : tightening the nuts, screwing the bolts, hammer and lever.

Reference	Nuts Ø	Length	Weight
AOAS19_22AB	19-22 mm	335 mm	0,72 kg
AOAS21_22AB	21-22 mm	335 mm	0,72 kg



SPANNER

Drop forged chrome finish.
Traditional heavy wrench for nuts.

Reference	Nuts Ø	Length	Weight
AOAB21_22AA	21-22 mm	325 mm	1,7 kg



TOOL HOLDER BELT

Full grain cowhide belt with buckle.
Hammer holder and scaffold key holder available as an accessory.

Reference	Designation
FIRN00001AA	ceinture porte-outil
FIRN00002AA	Etui porte-marteau
FIRN00003AA	Etui porte-clé échafauteur

SCAFFOLDING STRUCTURES

Axmann presents its safety and mounting accessories for scaffolding structures. Find our heads, couplers and spare parts below.



UNIVERSAL STUD COUPLER (LAYHER)

Galvanized steel.

Reference	Tube diameter	Weight
AEMG49_38AA	Ø 49 mm	2,00 kg



BRACE DIAGONAL HEAD

Galvanized steel.

Delivered with wedge and rivet.

Reference	Arrival side	Weight
AEAB49_14AA	Right	0,65 kg
AEAB49_14AB	Left	0,65 kg



LEDGER END

Raw steel.

Reference	Height	Weight
AEAN49_AA	66 mm	0,43 kg



LEDGER END WEDGE

Galvanized steel.

Reference	Length	Weight
AEEB28120AA	110 mm	0,60 kg



WEDGE RIVET

Galvanized steel.

Reference	Length	Weight
AEUB04_09AA	20 mm	0,03 kg

PRODUCTS ON CONSULTATION

Our catalog also offers other products that we can supply to order. Find them below and equip yourself for sites conducted safely.

STEEL FLOOR

Sendzimir folded steel.

Welded hooks, 8 mm thickness. Thickness of the steel sheet 15/10. Width 30 cm. Length from 1 m to 3 m.

WOODEN FLOOR

Wood.

Width 21 cm. Thickness 4 cm. Available length from 1 m to 4 m.

ALUMINIUM BEAM

Aluminum.

Height 45 cm. Available length from 3 m to 8 m.

ALUMINIUM TUBE

Aluminum.

Complies with standard EN 10 219. Available length up to 6 m (cut on request possible)

CONSTRUCTION BARRIER

Galvanized steel.

Height 1m. Length 1,5 m. Red color.

U FRAME

57 x 47 cm or 58 x 52 cm.

REINFORCED FRAME

Reinforced frame 122 x 73 cm. Height 95 cm.

STORAGE BASKET

Wire basket with flap 835 x 1240 x 970 cm or basket with uprights 125 x 85 cm.

STEEL STRAPPING

Steel 19x300 mm.

SMOOTH RAILING

Galvanized steel. Diameter 33.7 mm. 2.5 mm thick. Length 3.00 m. Painted ends on 30 cm with cap.

Scaffolding

TAILOR-MADE AND CUSTOMIZABLE

Axmann is there for you, at all stages of your projects. We therefore offer personalized services for some of our products. Take advantage of both Axmann quality and our unique services.



YOUR CUSTOM SCAFFOLDING TUBES

Each site is by nature unique, our company offers solutions that can be adapted to each of your situations.

It is with this concern to always be attentive and at the service of our customers that we offer a custom cut of all your scaffolding tubes and formwork rods.

Trust us to adapt quickly and efficiently.

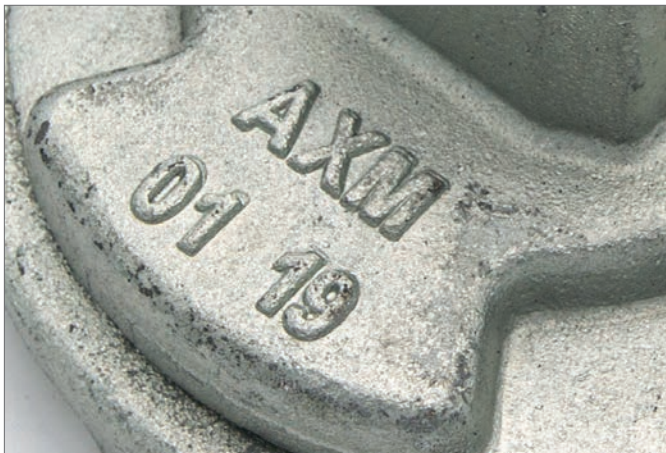


MARKING ON PRODUCTS

Scaffolding thefts are unfortunately common on construction sites. But sometimes these missing materials can be the result of carelessness or error.

This is why we suggest that you mark your products purchased from Axmann for quick and easy identification of your equipment.

A logo, an inscription, a date, you can mark whatever you want by calling on us.



CHOOSE THE COLOR OF YOUR BASE JACK PROTECTION

Some of our products can be personalized up to the choice of color.

This is the case for our Base jack protection. Stand out from your competitors and choose your own color. For scaffolding recognizable at a glance.



Shoring



SHORING ACCESSORIES

Axmann also offers its range of accessories for shoring towers. All our products have been designed to meet the needs of businesses in terms of compliance with European standards. Safety, robustness and efficiency are our watchwords for guaranteed construction sites.



U FORK JACK

Hot dip galvanized steel.

Fork length 130 mm x internal width 190 mm x internal height 100 mm. Fork thickness 8 mm.

Reference	For tube	Height	Weight
AVMG38070AA	Ø 49 mm	700 mm	5,80 kg



FORK HEAD

Hot dip galvanized steel.

Ext. Fork 240 x 150 mm – interior 175 x 80 mm, angles iron H.100. Tube Ø 26.5 x 10 mm – Plate thickness 6 mm.

Reference	For tube	Height	Weight
AVMG18_09AA	Ø 49 mm	240 mm	3,00 kg



SHORING BASE JACK

Galvanized steel à chaud

For Ø 57 mm tube – Ø 48.3 mm threaded tube. Adjustment height 630mm.

Reference	Height	Weight
FVMG48090AC	900 mm	7,30 kg

Formwork



NUTS FOR 15-17 MM RODS

Made of high-strength steel, our 15-17 mm Diameter nuts with Dywidag thread will be ideal for your portable formwork.

FORGED STEEL NUTS

At Axmann, all forged nuts comply with DIN 18216. Our forged nuts have a higher load capacity than GS cast iron nuts. Our two ranges will adapt to your different needs.

Our advice: it is recommended to use a plate if the base of the nut is less than 65 mm.



TWO WING NUT BASE 36

Electrogalvanized forged steel.
Capacity load 97 kN. DIN 18 216 standard.

Reference	Height	Ext. Ø	Mounting	Weight
AYAB17036AA	51 mm	110 mm	27 mm wrench	0,35 kg



TWO WINGS NUT BASE 70

Electrogalvanized forged steel.
Capacity load 97 kN. DIN 18 216 standard.

Reference	Height	Ext. Ø	Mounting	Weight
AYAB17070AA	45 mm	120 mm	27 mm wrench	0,51 kg



TWO WINGS NUT BASE 100

Electrogalvanized forged steel.
Capacity load 97 kN. DIN 18 216 standard.

Reference	Height	Ext. Ø	Mounting	Weight
AYAB17100AA	48 mm	100 mm	27 mm wrench	0,65 kg



THREE WINGS NUT BASE 65

Electrogalvanized forged steel.
Capacity load 97 kN. DIN 18 216 standard.

Reference	Height	Ext. Ø	Mounting	Weight
AYAB17065AA	50 mm	102 mm	27 mm wrench	0,61 kg

NUTS FOR 15-17 MM RODS

Made of high-strength steel, our 15-17 mm Diameter nuts with Dywidag thread will be ideal for your portable formwork.

SPHEROIDAL GRAPHITE CAST IRON NUTS

Our GS cast iron nuts have a lower capacity load than forged nuts at a cost which is also lower. Our two ranges will adapt to your different economic or technical requirements.



TWO WING NUT BASE 36

Electrogalvanized ductile iron.
Capacity load 90 kN.

Reference	Height	Ext. Ø	Mounting	Weight
FYOB17036AA	58 mm	90 mm	27 mm wrench	0,35 kg



THREE WINGS NUT BASE 70

Electrogalvanized ductile iron.
Capacity load 90 kN.

Reference	Height	Ext. Ø	Mounting	Weight
AYOB17070AA	54 mm	70 mm	27 mm wrench	0,46 kg



THREE WINGS NUT BASE 110

Electrogalvanized ductile iron.
Capacity load 90 kN.

Reference	Height	Ext. Ø	Mounting	Weight
AYOB17110AA	52 mm	110 mm	27 mm wrench	0,82 kg



THREE WINGS NUT BASE 130

Electrogalvanized ductile iron.
Capacity load 90 kN.

Reference	Height	Ext. Ø	Mounting	Weight
AYOB17130AA	52 mm	130 mm	27 mm wrench	0,75 kg



NUT WITH TURNING WASHER

Electrogalvanized ductile iron.
Capacity load 90 kN. The nut pivots and tilts approximately 11 ° on its axis..

Reference	Height	Washer dim.	Mounting	Weight
AYFB17118AA	64 mm	118 x 118 mm	27 mm wrench	1,24 kg

NUTS FOR 15-17 MM RODS

Made of high-strength steel, our 15-17 mm Diameter nuts with Dywidag thread will be ideal for your portable formwork.

VARIOUS NUTS

Find below : various nuts for your specific uses.



LOCK NUT 30×30

Electrogalvanized or black tapped steel.
Dywidag thread Ø 15-17 mm. Capacity load 50 kN.

Reference	Length	Finition	Mounting	Weight
AYUB17030AA	30 mm	Galvanized	30 mm wrench	0,12 kg
AYUN17030AA	30 mm	Black	30 mm wrench	0,12 kg



HEXAGONAL NUT 30×50

Electrogalvanized or black tapped steel.
Dywidag thread Ø 15-17 mm. Capacity load 90 kN.

Reference	Length	Finition	Mounting	Weight
AYUB17050AA	50 mm	Galvanized	30 mm wrench	0,21 kg
AYUN17050AA	50 mm	Black	30 mm wrench	0,21 kg



HEXAGONAL COUPLER 30×105

Electrogalvanized or black tapped steel.
Dywidag thread Ø 15-17 mm. Capacity load 90 kN. For joining 2 rods.

Reference	Length	Finition	Mounting	Weight
AYUB17105AA	105 mm	Galvanized	30 mm wrench	0,44 kg
AYUN17105AA	105 mm	Black	30 mm wrench	0,44 kg



WATER STOPPER

Black ductile iron.
Dywidag thread Ø 15-17 mm. Capacity load 90 kN. For tanks.

Reference	Length	Ext. Ø	Mounting	Weight
AYFN17110AA	110 mm	66 mm	30 mm wrench	0,58 kg

15-17 MM RODS

Our high resistance steel rods 15-17 mm are designed to meet the NF P 93-350 standard in force. You will find below the standard lengths, but it is possible to order your rods for cutting.



BLACK FORMWORK ROD

Black steel.

Standard dywidag thread. Specification NF P 93-350. Weldable and bendable rods. It is possible to order the rods at the cutting.

Reference	Length	Weight
TUGN17050AA	0,50 m	0,72 kg
TUGN17075AA	0,75 m	1,09 kg
TUGN17100AA	1,00 m	1,45 kg
TUGN17120AA	1,20 m	1,73 kg
TUGN17150AA	1,50 m	2,18 kg
TUGN17200AA	2,00 m	2,91 kg
TUGN17300AA	3,00 m	4,36 kg
TUGN17600AA	6,00 m	8,72 kg



ZINC PLATED FORMWORK ROD

Galvanized steel.

Standard Dywidag thread. Specification NF P 93-350. Weldable and bendable rods. It is possible to order the rods at the cutting.

Reference	Length	Weight
TUGB17050AA	0,50 m	0,73 kg
TUGB17075AA	0,75 m	1,09 kg
TUGB17100AA	1,00 m	1,45 kg
TUGB17120AA	1,20 m	1,74 kg
TUGB17150AA	1,50 m	2,18 kg
TUGB17200AA	2,00 m	2,91 kg
TUGB17300AA	3,00 m	4,36 kg
TUGB17600AA	6,00 m	8,72 kg

ACCESSORIES FOR 15-17 MM RODS

Find Axmann quality for your accessories for 15-17 mm rods. Foot plate, anchoring foot or wall anchor, our stocks are there to meet your needs.



WALL ANCHOR

Black ductile iron.

Dywidag thread Ø 15-17 mm. Drilling Ø 35 to 38 mm with min depth. 230 mm

Reference	Length	Weight
AYON17036AA	110 mm	0,36 kg



ANCHORING FOOT

Black ductile iron.

Dywidag thread Ø 15-17 mm. Octogonal base Ø 67 mm.

Reference	Height	Weight
AYFN17052AA	52 mm	0,33 kg



FOOT PLATE 130×70

Black pressed steel.

To use with Ø 15-17 mm nuts.

Reference	Thickness	Trou central	Trou latéral	Weight
AYEN17130AA	10 mm	Ø 20 mm	Ø 12,5 mm	0,70 kg

NUTS FOR 20-23 MM RODS

Made of high-strength steel, our 20-23 mm Diameter nuts with dywidag thread will be ideal for your tall formwork. All our nuts comply with DIN 18 216 standard.



TWO WINGS NUT BASE 62

Electrogalvanized forged steel.

Dywidag thread Ø 20-23 mm. Capacity load 172 kN. DIN 18 216 standard.

Reference	Height	Ext. Ø	Mounting	Weight
AYAB23062AA	67 mm	118 mm	36 mm wrench ou 38	0,74 kg



THREE WINGS NUT BASE 80

Galvanized forged steel.

Dywidag thread Ø 20-23 mm. Capacity load 172 kN. DIN 18 216 standard.

Reference	Height	Ext. Ø	Mounting	Weight
AYAB23080AA	61 mm	120 mm	36 mm wrench	1,08 kg



NUT WITH TURNING WASHER

Galvanized forged steel.

Dywidag thread Ø 20-23 mm. Capacity load 172 kN. DIN 18 216 standard.

Reference	Height	Base diameter	Mounting	Weight
FYAB23093AA	69 mm	90 mm	36 mm wrench	1,09 kg

FOR SATECO TYPE FORMWORK

Find our products for the metal formwork of the SATECO brand.



FIXED NUT

Galvanized forged steel.

Dywidag thread Ø 20-23 mm. Capacity load 172 kN. DIN 18 216 standard.

Reference	Height	Top dimension	Base diameter	Weight
AYAB23080AB	60 mm	35x35 mm	80 mm	0,70 kg



NUT WITH TURNING WASHER

Galvanized forged steel.

Dywidag thread Ø 20-23 mm. Capacity load 172 kN. DIN 18 216 standard.

Reference	Height	Base diameter	Mounting	Weight
AYAB23090AB	62 mm	90 mm	36 mm wrench	0,96 kg

NUTS FOR 20-23 MM RODS

Made of high-strength steel, our 20-23 mm Diameter nuts with dywidag thread will be ideal for your tall formwork. All our nuts comply with DIN 18 216 standard.

FOR OUTINORD TYPE FORMWORK

Find our products for the metal formwork of the OUTINORD brand.



FIXED NUT

Electrogalvanized forged steel.

Dywidag thread Ø 20-23 mm. Capacity load 172 kN. DIN 18 216 standard.

Reference	Height	Top dimension	Base diameter	Weight
AYAB23090AA	60 mm	35x35 mm	90 mm	0,90 kg



NUT WITH TURNING WASHER

Electrogalvanized forged steel.

Dywidag thread Ø 20-23 mm. Capacity load 172 kN. DIN 18 216 standard. Crimped nut on turning washer.

Reference	Height	Base diameter	Mounting	Weight
AYAB23093AA	71 mm	90 mm	38 mm wrench	1,06 kg

FOR HUSSOR TYPE FORMWORK

Find our products for the metal formwork of the HUSSOR brand.



NUT WITH TURNING WASHER BASE 100

Electrogalvanized forged steel.

Dywidag thread Ø 20-23 mm. Capacity load 172 kN. DIN 18 216 standard.

Reference	Height	Base diameter	Mounting	Weight
AYAB23101AA	53 mm	100 mm	36 mm wrench	1,31 kg



NUT WITH TURNING WASHER BASE 120

Electrogalvanized forged steel.

Dywidag thread Ø 20-23 mm. Capacity load 172 kN. DIN 18 216 standard.

Reference	Height	Base diameter	Mounting	Weight
AYAB23120AC	62 mm	120 mm	36 mm wrench	1,78 kg



NUT WITH TURNING WASHER

Electrogalvanized forged steel.

Dywidag thread Ø 20-23 mm. Capacity load 172 kN. DIN 18 216 standard.

Reference	Height	Base diameter	Mounting	Weight
AYAB23120AB	58 mm	120 mm	36 mm wrench	1,25 kg

NUTS FOR 20-23 MM RODS

Made of high-strength steel, our 20-23 mm Diameter nuts with dywidag thread will be ideal for your tall formwork. All our nuts comply with DIN 18 216 standard.

VARIOUS NUTS

Find below : various nuts for your specific uses.



LOCK NUT 36×30

Black tapped steel.

Dywidag thread Ø 20-23 mm. Capacity load 90 kN.

Reference	Length	Mounting	Weight
AYUN23030AA	30 mm	36 mm wrench	0,18 kg



HEXAGONAL NUT 36×60

Black tapped steel.

Dywidag thread Ø 20-23 mm. Capacity load 172 kN.

Reference	Length	Mounting	Weight
AYUN23060AA	60 mm	36 mm wrench	0,34 kg



HEXAGONAL COUPLER 36×130

Electrogalvanized steel.

Reference	Length	Mounting	Weight
AYUB23130AA	130 mm	36 mm wrench	0,75 kg



WATER STOPPER

Black ductile iron.

Dywidag thread Ø 20-23 mm. For tanks.

Reference	Length	Ext. Ø	Mounting	Weight
AYFN23150AA	150 mm	90 mm	42 mm wrench	1,41 kg

20-23 MM RODS

You will find below the standard lengths, but it is possible to order your rods for cutting.



BLACK FORMWORK ROD

Black steel. Standard Dywidag thread. Specification NF P 93-350. Weldable and bendable rods.

Reference	Length	Weight
TUGN23050AA	0,50 m	1,23 kg
TUGN23075AA	0,75 m	1,85 kg
TUGN23100AA	1,00 m	2,47 kg
TUGN23120AA	1,20 m	2,96 kg
TUGN23150AA	1,50 m	3,70 kg
TUGN23200AA	2,00 m	4,94 kg
TUGN23300AA	3,00 m	7,40 kg
TUGN23600AA	6,00 m	14,83 kg



ZINC PLATED FORMWORK ROD

Galvanized steel. Standard Dywidag thread. Specification NF P 93-350. Weldable and bendable rods.

Reference	Length	Weight
TUGB23050AA	0,50 m	1,23 kg
TUGB23075AA	0,75 m	1,85 kg
TUGB23100AA	1,00 m	2,47 kg
TUGB23120AA	1,20 m	2,96 kg
TUGB23150AA	1,50 m	3,71 kg
TUGB23200AA	2,00 m	4,94 kg
TUGB23300AA	3,00 m	7,41 kg
TUGB23600AA	6,00 m	14,82 kg

ACCESSORIES FOR 20-23 MM RODS

Find Axmann quality for your accessories for rods 20-23 mm.



WALL ANCHOR

Black ductile iron.
Drilling Ø 42 to 45 mm with min. 230 mm.

Reference	Length	Weight
AYON23041AA	130 mm	0,48 kg



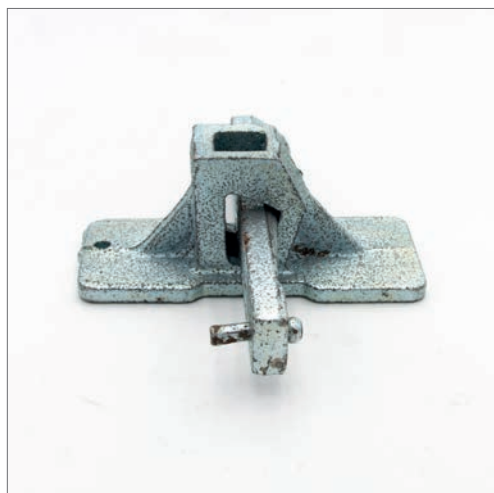
FOOT PLATE 120×120

Black pressed steel. To use with Ø 20-23 mm nuts.

Reference	Thickness	Central hole	Lateral hole	Weight
AYEN23120AA	12 mm	Ø 25 mm	Ø 13 mm	1,31 kg

VARIOUS ACCESSORIES

Our catalog also offers various accessories for formwork. Find our selection of wrench as well as our steel spacer and other formwork clamps.



RAPID WEDGE CLAMP

Electrogalvanized ductile iron.
For rebar Ø 8 to 10 mm.

Reference	Height	Foot plate dimension	Weight
AYEB00010AA	46 mm	107 x 43 mm	0,41 kg



SPRING WEDGE CLAMP

Electrogalvanized pressed steel.
For rebar Ø 6 to 11 mm.

Reference	Height	Foot plate dimension	Weight
AYEB00011AA	66 mm	110 x 75 mm	0,43 kg



CLIP TENSIONER

Electrogalvanized steel.

Reference	Length	Weight
AYEB00470AA	470 mm	2,74 kg

VARIOUS ACCESSORIES

Our catalog also offers various accessories for formwork. Find our selection of wrench as well as our steel spacer and other formwork clamps.



RATCHET WRENCH

Galvanized forged steel.

With rubber handle. Length 570 mm.

Reference	Diameter	Weight
FYEB36_00AB	36 mm	2,68 kg
FYEB38_00AB	38 mm	2,68 kg

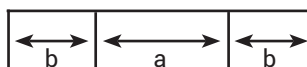


STEEL SPACER

Black pressed steel.

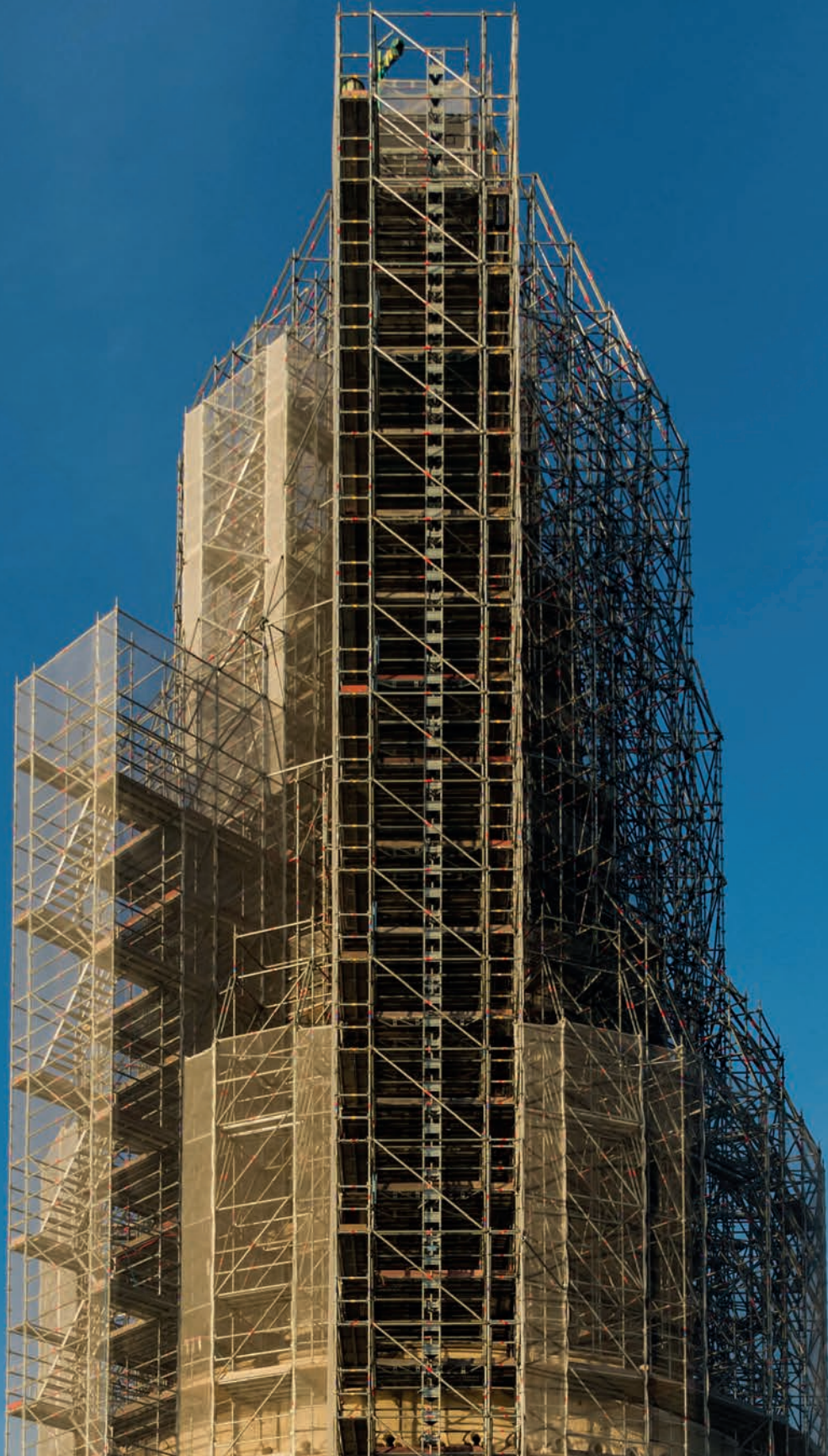
Thickness 6 mm.

Dimensions



Reference	Dimension a	Dimension b	Weight
AYEN10150AA	150 mm	100 mm	0,86 kg
AYEN10180AA	180 mm	100 mm	0,91 kg
AYEN10200AA	200 mm	100 mm	0,95 kg
AYEN12200AA	200 mm	120 mm	1,03 kg
AYEN10220AA	220 mm	100 mm	0,97 kg
AYEN10250AA	250 mm	100 mm	1,03 kg
AYEN12250AA	250 mm	120 mm	1,12 kg

Tarps and nets



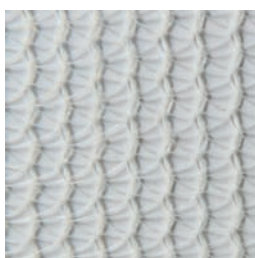
Tarps and nets

SCAFFOLDING NETS

35g/m² TRIANGULAR MESH NET

Knitted net with buttonhole on the two sides every 5 cm.

To prevent rubble and dust caused by paint cleaning work from soiling the public road, our scaffolding nets guarantee a clean and secure site. Our references are ideally sized to adapt to the widths of your scaffolding. **The 100% economical 35g / m² nets are more suitable for short-term construction and for single use.**



WHITE

Reference	Dimensions	Weight
AGPM30020AB	3,00 x 20 m	2,10 kg
AGPM30100AB	3,00 x 100 m	10,50 kg

50g/m² RECTANGULAR MESH NET

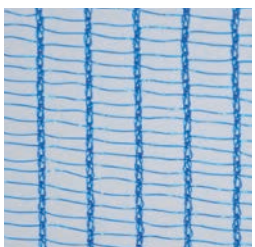
Knitted net with buttonhole on the two sides every 5 cm.

To prevent rubble and dust caused by paint cleaning work from soiling the public road, our scaffolding nets guarantee a clean and secure site. Our references are ideally sized to adapt to the widths of your scaffolding. **The 50g / m² nets are more suitable for short-term construction and for single use.**



WHITE

Reference	Dimensions	Weight
AGPM30020AA	3,00 x 20 m	3,00 kg
AGPM30100AA	3,00 x 100 m	15,00 kg



BLUE

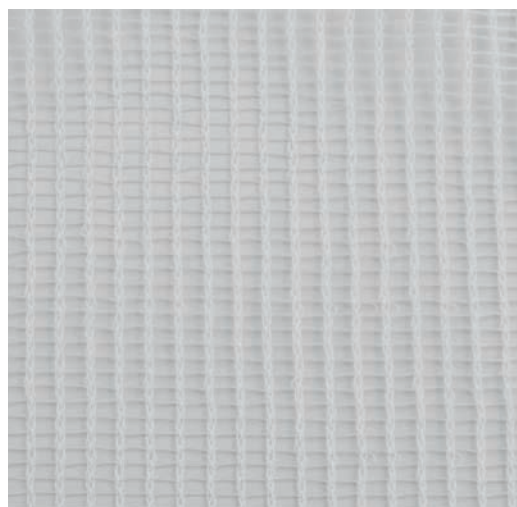
Reference	Dimensions	Weight
AGPM30720AA	3,07 x 20 m	3,07 kg
FGPM30100AA	3,00 x 100 m	15,00 kg

SCAFFOLDING NETS

100g/m² RECTANGULAR MESH NET

Knitted net with buttonhole on the two sides every 5 cm.

To prevent rubble and dust caused by paint cleaning work from soiling the public road, our scaffolding nets guarantee a clean and secure site. Our references are ideally sized to adapt to the widths of your scaffolding. **100g / m² nets are more suitable for long-term construction and can be reused.**



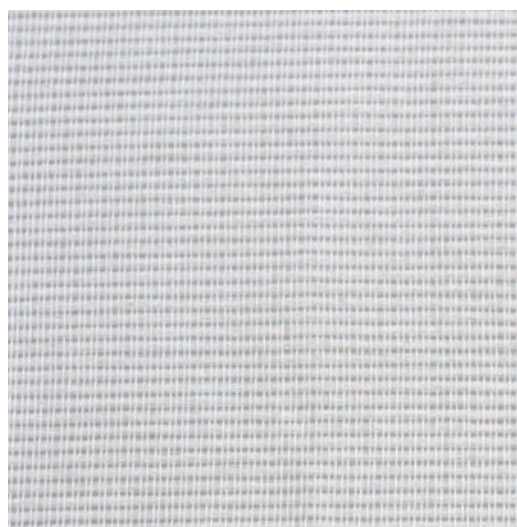
WHITE

Reference	Dimensions	Weight
FGPM30050AB	3,00 x 50 m	15 kg
FGPM30100AB	3,00 x 100 m	30 kg

WOVEN CANVAS 130g/m²

Striped monofilament woven net with reinforcement bands squaring the net every 50 cm. Fixing with loops every 50 cm around the perimeter and inside on the reinforcement strips on the 2 sides of the net. Reversible net.

High resistance and reusable, this net is ideally suited for all your exfoliation and sanding sites.



WHITE

Reference	Dimensions	Weight
AGPM10050AA	1,09 x 50 m	7,10 kg
AGPM15050AA	1,57 x 50 m	10,20 kg
AGPM20050AA	2,07 x 50 m	13,46 kg
AGPM25050AA	2,57 x 50 m	16,70 kg
AGPM30050AA	3,07 x 50 m	19,95 kg

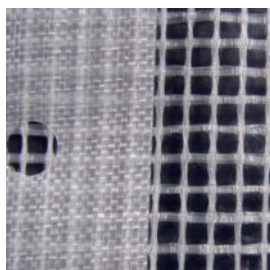
Tarps and nets

SCAFFOLDING TARPS

TARPAULINS 170g/m² and 280g/m²

Pre-hole strips in the reinforcing strip: double on high side, simple on low side and two inside.

Ideal for the protection of construction sites releasing large projections, our reinforced tarpaulins offer solidity and resistance for your construction sites.



TRANSLUCENT 170g/m²

Reference	Dimensions	Weight
AGPL32020AA	3,20 x 20 m	11,00 kg

TRANSLUCENT 280g/m²

Reference	Dimensions	Weight
FGPL30020AA	3,20 x 20 m	18,00 kg

GUARDRAIL NETS

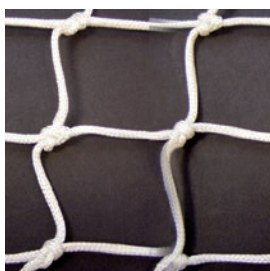
ANTI-FALL MAN NET

Complies with standard NF EN1263 - 1

White braided polyamide netting - 205 g / m²

100x100 mm mesh, 4.75 mm wire diameter and 12 mm diameter rope sewn around the edge of the net.

High resistance and reusable, this net is ideally suited to secure all your sites. Horizontal installation.



WHITE

Reference	Dimensions
FGNK01_10AA	1 x 10 m
FGNK02_10AA	2 x 10 m
FGNK01_20AA	1 x 20 m
FGNK02_20AA	2 x 20 m

WHITE WITH SEWN UNDERFACE 50g/m²

Reference	Dimensions
FGNK01_10AB	1 x 10 m
FGNK02_10AB	2 x 10 m
FGNK01_20AB	1 x 20 m
FGNK02_20AB	2 x 20 m

SECURITY NETS

HUMAN-FALL SAFETY NET

Complies with standard NF EN1263 - 1

White braided polyamide netting - 205 g / m²

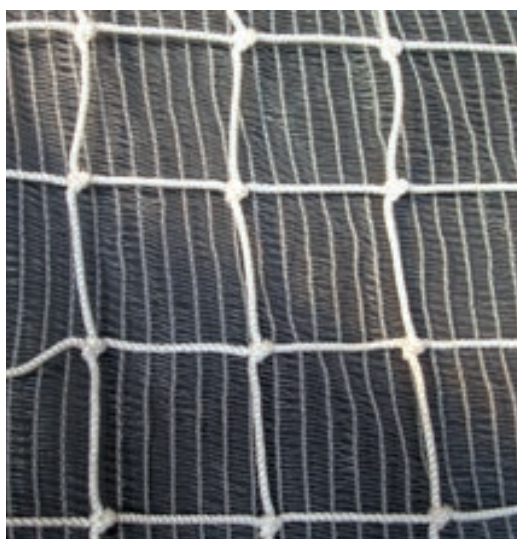
100x100 mm mesh, 4.75 mm wire diameter and 12 mm diameter rope sewn around the edge of the net.

High resistance and reusable, this net is ideally suited to secure all your sites. Horizontal installation.



WHITE

Reference	Dimensions
FGNK05_06AA	6 x 5 m
FGNK08_06AA	8 x 6 m
FGNK10_05AA	10 x 5 m
FGNK10_06AA	10 x 6 m
FGNK10_07AA	10 x 7 m
FGNK10_10AA	10 x 10 m
FGNK12_06AA	12 x 6 m
FGNK15_10AA	15 x 10 m
FGNK20_05AA	20 x 5 m
FGNK20_10AA	20 x 10 m



WHITE WITH SEWN UNDERFACE 50g/m²

Reference	Dimensions
FGNK10_10AB	10 x 10 m
FGNK10_05AB	10 x 5 m

Tarps and nets

ACCESSORIES

FIXATIONS

Find all the accessories to secure your nets safely.



Reference	Designation	Dimensions
AGPN48030AA	Straps by 100 pieces	300 x 4,8 mm
FGPN32_00AA	Elastic ties by 50 pieces	315 mm
FGNN12050AA	Polyamide strop	12 mm, 0,50 m
FGNN12070AA	Polyamide strop	12 mm, 0,70 m
FGFB10_00AA	Closed carabiner	10 mm

CONSTRUCTION POUCH

PVC tarpaulin on both sides. Scabbard flat 15 cm.



SIMPLE 37 X 45 CM

Reference	Designation
FIPN37045AA	Waterproof pouch with logo. Opening from the front
FIPN37045AB	Waterproof pouch with logo. Opening from behind



DOUBLE 48 X 50 CM

Reference	Designation
FIPN48050AA	Waterproof pouch with logo. Opening from the front



SCAFFOLDING, FORMWORK, SHORING ACCESSORIES
www.axmann-scaffolding.com